

MATERIAL SPECIFICATION SHEET

Stainless Steel Insert Fittings & Valves – Lead Free

Features & Benefits

Stainless Steel Insert PEX and PE-RT Lead Free (LF) fittings & valves are the ideal choices for PEX and PE-RT applications. They deliver premium quality and durability, featuring excellent corrosion resistance, suited for areas with acidic conditions and water quality concerns.



Performance Rating

- **Maximum Pressure Rating:** 100 PSI
- **Temperature Range:** Up to 180°F (82°C)



Performance Rating

- **Maximum Pressure Rating:** 600 PSI
Cold Working Pressure (CWP) up to +100°F (37°C)
- **Temperature Range:**
-40°F to 200°F (-40°C to 93°C)

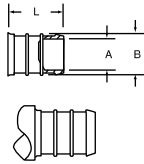
Specifications:

- 304 Stainless Steel
- Compatible with SDR9 PE-RT pipe (ASTM F2769; ASTM F2623)
- Compatible with SDR9 PEX pipe (ASTM F876)
- PEX / PE-RT ends conform to ASTM F1807 (crimp)
- Threads conform to ASME B1.20.1
- Available sizes: ½", ¾" and 1" diameters, see Price List Category 786 for more details

STAINLESS STEEL INSERT FITTINGS DIMENSIONS



Insert Fittings Dimensions



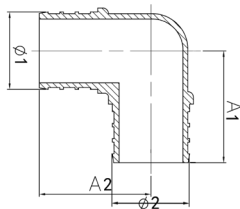
Size	A (Min ID)	B (OD of Rib) * ¹	L (Length) * ¹	# of Ribs * ²
3/8"	0.230	0.345 ± 0.004	0.625	2
1/2"	0.350	0.471 ± 0.004	0.625	2
5/8"	0.451	0.570 ± 0.003	0.625	2
3/4"	0.530	0.667 ± 0.004	0.625	2
1"	0.710	0.856 ± 0.004	0.795	3
1-1/4"	0.870	1.045 ± 0.004	0.940	3 Min
1-1/2"	1.020	1.233 ± 0.006	1.145	3 Min
2"	1.365	1.602 ± 0.005	1.500	3 Min

¹ Measured from shoulder of rib to tube stop.

² Lead chamfer area is not considered a rib.

NOTE: Dimensions are in English units.

90° PEX Elbow Dimensions

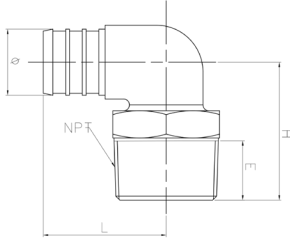


CB Supplies Part #	Size (in)	A1 ± 0.3 (mm)	A2 ± 0.3 (mm)	Φ1 ± 0.1 (mm)	Φ2 ± 0.1 (mm)
786006005	1/2"	24.20	24.20	11.96	11.96
786006007	3/4"	26.50	26.50	16.94	16.94
786006010	1"	35.50	35.50	21.74	21.74

STAINLESS STEEL FITTINGS

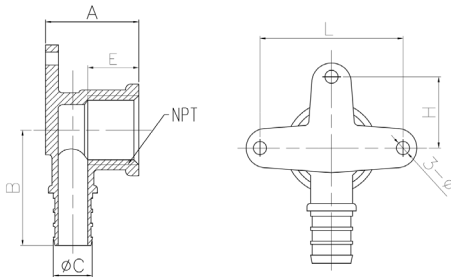


90° PEX x MIP Elbow Dimensions



CB Supplies Part #	Size (in)	H ± 0.3 (mm)	Φ ± 0.1 (mm)	L ± 0.3 (mm)	E (+1, -0) (mm)
786010005	1/2"	33.00	11.96	29.50	13.50
786010007	3/4"	35.50	16.94	31.80	13.50

Drop Ear PEX x FIP Elbow Part I

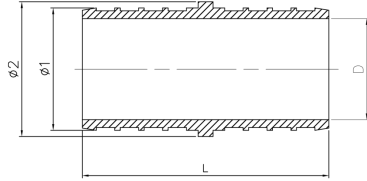


CB Supplies Part #	Size (in)	A ± 0.3 (mm)	B ± 0.3 (mm)	ΦC ± 0.3 (mm)	3-Φ (+0.1, -0) (mm)
786014005	1/2"	28.50	36.00	11.96	4.00
786014007	3/4"	34.0	36.00	16.96	4.00
786014043	3/4" x 3/4"	31.90	37.20	16.94	4.00

Drop Ear PEX x FIP Elbow Dimensions Part II

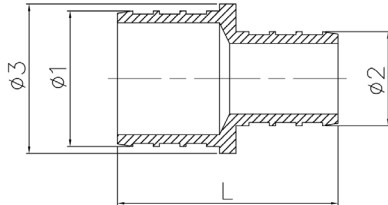
CB Supplies Part #	Size (in)	E (+0.5, -0) (mm)	L ± 0.3 (mm)	H ± 0.2 (mm)
786014005	1/2"	13.50	43.60	21.80
786014007	3/4"	13.00	43.60	21.80
786014043	3/4" x 3/4"	12.00	44.00	22.00

Coupling PEX Dimensions



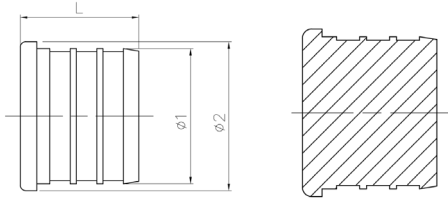
CB Supplies Part #	Size (in)	$\Phi 1 \pm 0.1$ (mm)	$\Phi 2 \pm 0.1$ (mm)	$L \pm 0.3$ (mm)	$D (+0.3, -0)$ (mm)
786029005	1/2"	11.96	14.00	35.00	8.89
786029007	3/4"	16.94	19.00	35.00	13.45
786029010	1"	21.74	24.00	44.00	18.00

Reducing Coupling PEX Dimensions



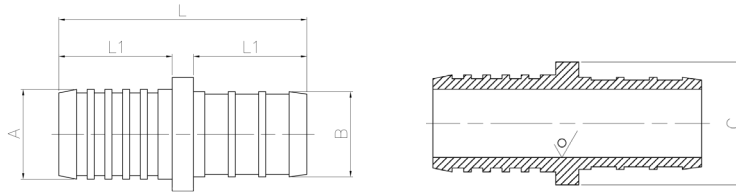
CB Supplies Part #	Size (in)	$\Phi 1 \pm 0.1$ (mm)	$\Phi 2 \pm 0.1$ (mm)	$\Phi 3 \pm 0.1$ (mm)	$L \pm 0.3$ (mm)
786029043	3/4" x 1/2"	16.94	11.96	19.00	35.6
786029054	1" x 3/4"	21.74	16.94	24.00	40.00

Plug PEX Dimensions



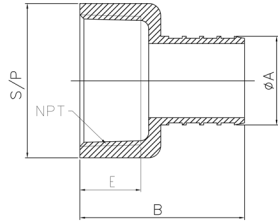
CB Supplies Part #	Size (in)	$\phi 1 \pm 0.1$ (mm)	$\phi 2 \pm 0.1$ (mm)	$L \pm 0.2$ (mm)
786029005	1/2"	11.96	14.00	18.00
786029007	3/4"	16.94	19.00	18.50
786029010	1"	21.74	24.00	23.20

Transitioning Coupling PEX x PB Dimensions



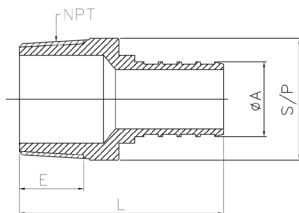
CB Supplies Part #	Size (in)	$A \pm 0.1$ (mm)	$B \pm 0.1$ (mm)	$C \pm 0.1$ (mm)	$L \pm 0.3$ (mm)	$L1 (+0.3, -0)$ (mm)
786028005	1/2"	12.70	11.96	14.00	35.00	16.00
786028007	3/4"	18.10	16.94	19.06	35.00	16.00
786028010	1"	23.00	21.74	25.40	43.90	20.20

Adapter PEX x FIP Dimensions



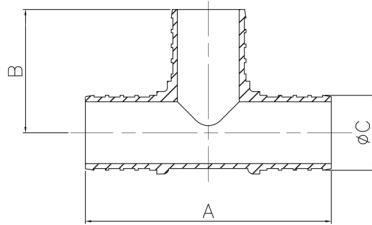
CB Supplies Part #	Size (in)	$\Phi A \pm 0.1$ (mm)	$B \pm 0.3$ (mm)	S/P (+0, -0.4) (mm)	E (+1, -0) (mm)
786035005	1/2"	12.00	42.40	22.00	13.50
786035007	3/4"	17.00	42.40	27.70	13.80
786035010	1"	21.70	48.00	35.00	17.30
786035034	1/2" x 3/4"	12.00	42.50	27.00	13.80
786035043	3/4" x 1/2"	17.00	42.50	22.00	13.50
786035045	3/4" x 1"	17.00	43.60	35.00	17.30

Adapter PEX x MIP Dimensions



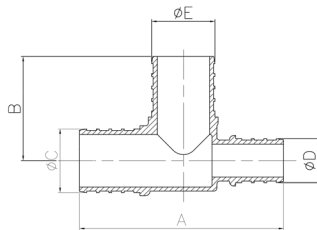
CB Supplies Part #	Size (in)	$\Phi A \pm 0.1$ (mm)	$L \pm 0.4$ (mm)	S/P (+0, -0.4) (mm)	E (+1, -0) (mm)
786036005	1/2"	11.96	34.50	25.00	13.50
786036007	3/4"	16.94	34.50	31.00	13.50
786036010	1"	21.74	40.70	38.00	15.00
786036034	1/2" x 3/4"	11.96	34.50	31.00	13.50
786036043	3/4" x 1/2"	16.94	34.00	25.00	13.50
786036045	3/4" x 1"	16.94	36.00	38.00	15.00
786036054	1" x 3/4"	20.80	36.70	31.00	13.50

Tee PEX Dimensions



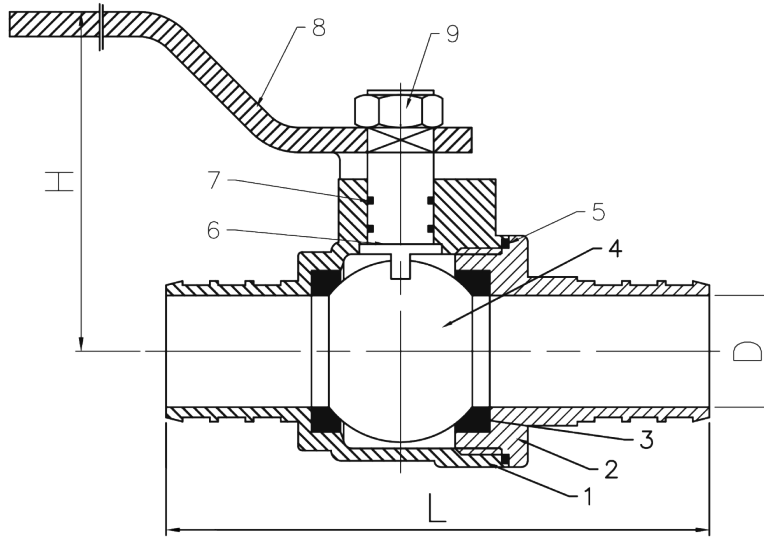
CB Supplies Part #	Size (in)	A ± 0.3 (mm)	B ± 0.3 (mm)	ΦC ± 0.1 (mm)
786001005	1/2"	58.30	24.15	11.96
786001007	3/4"	53.00	26.50	16.94
786001010	1"	70.00	35.00	21.74

Reducing Tee PEX Dimensions



CB Supplies Part #	Size (in)	A ± 0.3 (mm)	B ± 0.3 (mm)	ΦC ± 0.1 (mm)	ΦD ± 0.1 (mm)	ΦE ± 0.1 (mm)
786001433	3/4" x 1/2" x 1/2"	53.30	26.30	16.94	11.96	11.96
786001434	3/4" x 1/2" x 3/4"	53.60	27.00	16.94	11.96	16.94
786001443	3/4" x 3/4" x 1/2"	53.00	28.00	16.94	16.94	11.96
786001445	3/4" x 3/4" x 1"	70.60	35.00	16.94	16.94	21.74
786001534	1" x 1/2" x 3/4"	69.30	34.00	21.74	11.96	16.94
786001535	1" x 1/2" x 1"	67.00	35.00	21.74	11.96	21.74
786001543	1" x 3/4" x 1/2"	69.30	34.00	21.74	16.94	11.96
786001544	1" x 3/4" x 3/4"	67.00	32.00	21.74	16.94	16.94
786001545	1" x 3/4" x 1"	67.00	35.00	21.74	16.94	21.74
786001553	1" x 1" x 1/2"	70.00	31.50	21.74	21.74	11.96
786001554	1" x 1" x 3/4"	70.00	31.50	21.74	21.74	16.94

STAINLESS STEEL BALL VALVE DIMENSIONS & MATERIAL LIST



Ball Valve Dimensions

CB Supplies Part #	Size (in)	H ± 0.5 (mm)	D (+0.3, -0) (mm)	L ± 0.5 (mm)
705010005NL	1/2"	39.30	8.90	62.00
705010007NL	3/4"	42.00	13.50	66.00
705010010NL	1"	46.00	18.00	77.00

Ball Valve Material List

#	Part	Material
1	Body	Stainless Steel
2	Cap	Stainless Steel
3	Gasket	PTFE (Polytetrafluoroethylene)
4	Ball	Stainless Steel
5	O-Ring	Silica Gel
6	Stem	Stainless Steel
7	O-Ring	Silica Gel
8	Long Handle	Stainless Steel
9	Stem Nut	Stainless Steel