 **POTABLE
TUBING**
POLYETHYLENE OF
RAISED TEMPERATURE
(PE-RT) RESISTANCE



STRIKING PERFORMANCE

CB Supplies VIPERT™ Potable & Radiant PE-RT OXY barrier tubing offers industry leading performance with improved flexibility, lowest Greenhouse Gases (GHG) emission footprint and tubing is 100% recyclable, all backed by a 25-year warranty that is not compromised by your connection choices.



INDUSTRY LEADING FLEXIBILITY FOR EASIER & FASTER INSTALLATION

With relaxed memory you'll experience less spring back than PEX for easier and faster installations



100% RECYCLABLE

VIPERT is 100% recyclable, requires less energy to produce compared to PEX tubing, contributing to lowest GHG emissions footprint



CRIMP, EXPAND, OR PUSH

VIPERT Potable and Radiant is flexible for your preferred tubing methods, by crimping, expanding or with push style fittings, VIPERT does it all!



NO NONSENSE 25-YEAR WARRANTY

We stand behind our VIPERT with a transparent 25-year warranty regardless of fitting systems installed



STRENGTH, DURABILITY & BUILT FOR EXTREME TEMPERATURES

Exceeds all standards with exceptional hydrostatic strength at high temperatures and burst pressures, maintains excellent flexibility in both cold and hot environments



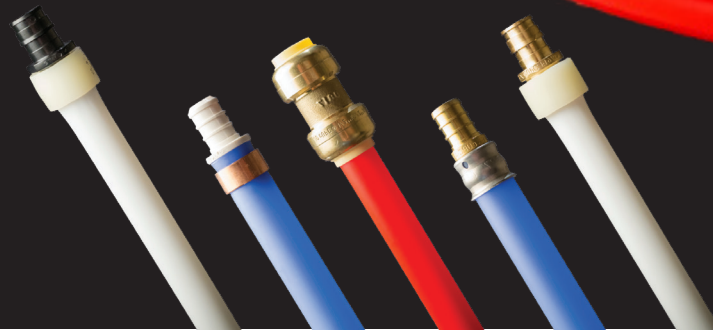
EASY LINE IDENTIFICATION BY COLOUR

White, red, and blue choices for Potable and VIPERT green for Radiant, available tubing sizes: 1/4" through 2"

Potable: ● ● ● Radiant: ●



1-800-665-1851
salesinfo@cbsupplies.ca
cbsupplies.ca





POTABLE TUBING

POLYETHYLENE OF RAISED TEMPERATURE (PE-RT) RESISTANCE

APPLICATIONS

VIPERT Potable is ideal for Residential and Commercial potable hot and cold water distribution.

VIPERT POTABLE SPECS

VIPERT Potable is available in a variety of sizes and colors.



| | |
|------------------|--|
| COILS | 100', 250', 300', 500', & 1000' |
| DIAMETERS | 1/4", 3/8", 1/2", 3/4", 1", 1-1/4", 1-1/2", & 2" |
| LENGTHS | 20' (other sizes available by region) |
| COLORS | Blue, White, & Red |

CERTIFICATIONS AND LISTINGS

VIPERT Potable tubing and material has undergone all the required North American testing to ensure it is suitable for potable water distribution systems.



CAN/ULC-S101 Fire Endurance Tests of Building Construction and Materials
UL263 Standard For Fire Tests of Building Construction and Materials



International Code Council – Evaluation Service. Plumbing, Mechanical and Fuel Gas Uniform Plumbing Code (UPC®)
International Plumbing Code (IPC®)

BMEC
23-01-403

Building Material Evaluation Commissions of Ontario. Building Code Act, 1992 (BCA)



ASTM F1960
ASSE 1061
ASTM F1807
ASTM F2159



Intertek

ASTM E84: Standard Test Method for Surface Burning Characteristics of Building Materials
CAN/ULC-S102.2: Standard Method of Test for Surface Burning Characteristics of building Materials



NSF/ANSI/CAN 61 (Potable Water)
NSF/ANSI/CAN 372
CSA B137.18
ASTM F2769

VIPERT.COM cbsupplies.ca
(800) 665-1851 salesinfo@cbsupplies.ca

