



VIPERT™ (PE-RT) Potable Water Tubing

CATEGORY 741



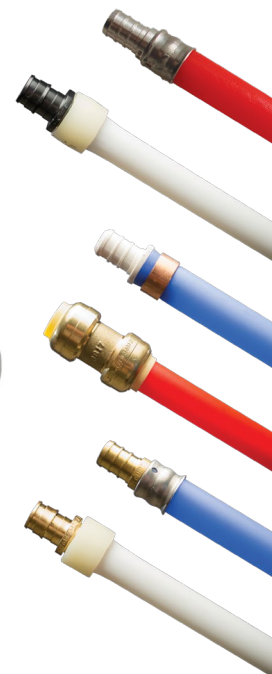
Blue



Red



White



FEATURES & BENEFITS

- Crimp, expand, or push
- 12' & 20' Lengths available
- 100' Through 1000' rolls available
- 1/4" Through 2"
- Meets and exceeds all North American testing standards for potable water distribution systems
- 100% Recyclable



TOTAL SYSTEM SOLUTION



Price List Reference: 741 – VIPERT (PE-RT) Potable Water Tubing